

TACKLING THE WIDER DETERMINANTS OF HEALTH: RESEARCH INTO POLICY

Bradford City Football Club 18.04.24



Bradford City
Football Club
Valley Parade
Bradford
BD8 7DY

AGENDA

Morning session - all attendees

9.30am

Registration opens & welcome refreshments

Session 1
10.00-10.45
(Banqueting Suite)

Welcome: Tracy Brabin, Mayor of West Yorkshire and John Wright, Director of the Bradford Institute for Health Research

Keynote: Tackling the Wider Determinants of Health: Why Local Government is Key
Brian Ferguson, Director NIHR Public Health Research Programme

Future Landscape of Population Health Research Funding

Session 2
10.45-11.30
(Banqueting Suite)

- Deborah Lawlor, Deputy Director Medical Research Council, Epidemiology Unit (C)
- Brian Ferguson, Director NIHR Public Health Research Programme
- Nick Wareham, Director of the MRC Epidemiology Unit, University of Cambridge
- Ashley Adamson, Director NIHR Research Support Service Public Health Specialist Centre
- Sophie Hawkesworth, Senior Research Manager at The Wellcome Trust

How we embed research into local government systems: Conversations about the challenges of creating a research culture in a wider, complex system

Session 3
11.30-12.15
(Banqueting Suite)

- Trevor Sheldon, Co-Director of ActEarly City Collaboratory (C)
- Susan Hinchcliffe, Leader of City of Bradford Metropolitan District Council
- John Wright, Director of Bradford Institute for Health Research
- David Pye, Research Programme Lead at Local Government Association
- Kersten England, Chair of the Young Foundation & Co Director, YPIP
- Somen Banerjee, Director of Public Health, London Borough of Tower Hamlets

12.15-13.15

Lunch - opportunity to network and discuss key learning
12.45 ActEarly Project Walk

AGENDA

Afternoon session – Choice of Panel A or B

Panel A Banqueting Suite via McCalls Entrance

Panel B 2013 Suite (Upstairs)

Session 4
13.15-13.55

How to support healthy livelihoods *Working to stop children starting life in poverty*

John Hudson, University of York (C)
Iain MacBeath, City of Bradford
Metropolitan District Council
Claire Cameron, University College
London
Kate Pickett, University of York
Somen Banerjee, London Borough of
Tower Hamlets

How to link administrative data *Linking routine electronic data across the system*

Emma Gordon, ADR UK, ESRC (C)
Kuldeep Sohal, Connected Bradford
Ruth Gilbert, University College
London
Rob Shore, Health Determinants
Research Collaboration, City of
Bradford Metropolitan District Council

Session 5
14.00-14.40

How to create healthy places *Creating better environments to support healthy children*

Andy Cope, Sustrans (C)
Lorraine O'Donnell, City of Bradford
Metropolitan District Council
Rosie McEachan, Director of Born In
Bradford
Nicola Christie, University College
London
Saira Ali, City of Bradford
Metropolitan District Council
Laura Vaughan, University College
London

How to coproduce research with communities *Developing impactful interventions with your community*

Shahid Islam, Bradford Institute for
Health Research (C)
Naomi Mead, Bromley By Bow
Kim Shutler, The Cellar Trust
Sayma Mirza, West Yorkshire
Integrated Care Board

Session 6
14.45-15.30

How to support healthy schools *Working to provide a better start to learning for children*

Mark Mon-Williams, University of
Leeds (C)
Kathryn Loftus, Director for the
Education Alliance for Life Chances
Nadira Mirza, Leeds Trinity University

Evaluation *Evaluating prevention interventions*

Karien Stronks, University of Amsterdam (C)
Maria Bryant, University of York
Sarah Muckle, City of Bradford
Metropolitan District Council
Elizabeth Orton, PHIRST-Light, University of
Nottingham
Dan Lewer, Bradford Institute for Health
Research

*(C) Chair

Tracy Brabin



Tracy Brabin has served as the Mayor of West Yorkshire since the office was established on 10 May 2021. She was previously the Member of Parliament for Batley and Spen from 2016 to 2021 under the Labour and Co-operative banner.

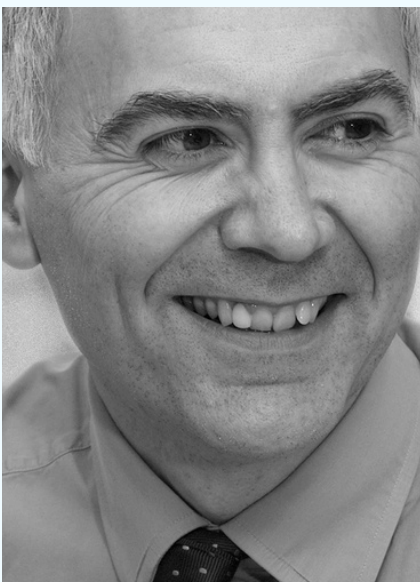
John Wright



John Wright is a doctor and epidemiologist. He established the Bradford Institute for Health Research and Wolfson Centre for Applied Health Research, where he is Director. BIHR works to speed up translation of medical research into practice and policy.

10.15 - Keynote address

Brian Ferguson



Brian Ferguson has worked in the health field throughout his career in academia, the NHS and Civil Service. He was previously a Professor of Health Economics and has been a registered public health professional since 2007. Since 2013 he has been employed by Public Health England where he was Chief Economist and Deputy Director of Strategy. Brian is NIHR Public Health Research (PHR) Programme Director.

HEALTHY LEARNING



Objectives of the theme

The start of ActEarly coincided with the Department for Education's investment (£16M) in Bradford through the Bradford Opportunity Area (BOA).

We were offered a place on the BOA partnership board so that decisions could be based on the best possible evidence. The focus of the BOA was on 'social mobility' but we used the Act Early infrastructure and expertise to argue that: (i) health and wellbeing barriers to social mobility needed to be addressed within a 'whole system' approach; (ii) decisions needed to be based on the best possible evidence; (iii) Connected Bradford datasets could provide insights into the intersections between health and education.

The BOA agreed with these arguments and invested £1M to create the 'Born in Bradford Centre for Applied Education Research' (CAER).

What we have learnt

We have created a new 'Education Alliance for Life Chances' (EALC) partnership board as its legacy and EALC now acts as a 'critical friend' to CAER. The methodology developed through Act Early Healthy Learning is now being rolled out across the North of England through the N8's 'Child of The North' initiative.

Next Steps

We have already received a tranche of external investment to ensure a sustainable future. CAER have been commissioned to lead the production of 12 parliamentary reports over 2024 on topics deemed to be a priority by our external stakeholders. These reports capture and promote the research generated by Act Early.

Please see the full repository of the Healthy Learning theme's work via the QR code above.



HEALTHY PLACES



Objectives of the theme

We wanted to identify opportunities for co-design by working with strategic contacts in both Local Authorities to identify existing sources of data, for project evaluation. We also aimed to develop spatial modelling and built environment methods, coordinating work with the co-design theme so that intervention planning can involve the community.

What we have learnt

In our Street Based Interventions we have developed the Health and Place Intervention Evaluation (HaPIE) tools, while in housing our work in Tower Hamlets and Bradford on the lived experience of parents (in partnership with local community organisations) has emphasised the need to consider indicators for healthy homes which address potential synergies across the home environment, neighbourhood characteristics and the local community. Moreover, the wellbeing impacts of overcrowding on children and their families has emerged as of particular concern in Tower Hamlets, where we are working with community researchers and the Bromley by Bow Centre to explore the potential for a wide range of overcrowding metrics and interventions.

Next Steps

Building on earlier work and policy briefings, we plan to further understand how the implications of our findings map onto local government's priorities and targets across public health and housing, to help maximise potential for research impact in the long term. We are also preparing a grant on whether developments that involve community engagement create places that better support the health and wellbeing of residents in deprived areas – linked to our Health Impact Assessment of New Developments Tool.

The Healthy Places theme has recently been awarded UKRI Population Health Cluster funding (£7.5 million). The Healthy Urban Places (HUP) cluster will help sustain important Healthy Places work building on the strong foundations created by ActEarly in data science, linked data, local government embedded researchers and community co-production. Working with researchers in two key areas (Bradford and Liverpool) HUP will help us better understand how to make city-wide urban changes to improve our health.

Please see the full repository of the Healthy Places theme work via the QR code above.





HEALTHY LIVELIHOODS



Objectives of the theme

“The more scientific evidence we have, the better the case for bringing in resources that could help improve the situation. That evidence will help us persuade the policy makers to search for solutions that will alleviate those income pressures on families”

<https://www.youtube.com/watch?v=M4Rn8738A8c>

The Healthy Livelihoods theme is trying to understand how families' incomes and livelihoods affects their health and wellbeing, both for the children and the families, in the short term and in the long term, and what can be done to address inequalities. We carry out research and evaluations of interventions, initiatives and policies to address child, young person and family wellbeing and opportunities through increasing income, skills and control over community resources. The main objectives are:

1. Policy advice and translation
2. New empirical research
3. Evaluation of local, national and international interventions

Some examples of our work

How did the Covid-19 Pandemic affect families with young children and those expecting a baby?

- Families in Tower Hamlets (ESRC funded) and a linked project Families in Newham (funded by LB Newham)
- The Born in Bradford 2020 Families' Study

How might a Universal Basic Income (UBI) improve health and wellbeing?

- UBI study in collaboration with Northumbria, Newcastle and Liverpool Universities and the Royal Society of Arts, Manufactures and Commerce (RSA)
- Evaluation of a UBI Pilot with Care Leavers in Wales

How can co-locating financial advice improve health and wellbeing?

- Systematic review and an evaluation of the Voluntary and Community Sector (VCS) Alliance welfare benefits advice programme co-located within Bradford's primary care network
- Healthier Wealthier Families in East London: a feasibility and acceptability study funded by East London Foundation Trust Charity and London Borough of Tower Hamlets

How can inequalities of access to early childhood education and care be addressed?

- Post-pandemic uptake of early childhood education and care via the 2-year-old offer
- Early Years Access: exploring structural, cultural and spatial barriers to early childhood education and care in Tower Hamlets and Bradford

Please see the full repository of the Healthy Livelihoods theme work via the QR code above.

FOOD & HEALTHY WEIGHT



Objectives of the theme

The Food and Healthy Weight theme works across ActEarly. We are committed to influencing policy and practice, supported by studies and evaluations, applying whole school approaches and thinking wider about health.

Our goal is to address food insecurity, improve access to healthy, affordable food, promote healthy eating to prevent childhood obesity and reduce child health inequalities.

What we have learnt

Our work has thrived thanks to our partnerships with Bradford and Tower Hamlets councils, charities, foundations, national bodies and local communities. By pooling together our knowledge and experience, we've enhanced our collective efforts to address child health inequalities.

We've evaluated, informed and influenced policies on food systems, free school meals, nutrition, food insecurity and health communication on children's weight. A recent success story shows that many more children now access and take up free school meals, through extra funding given to 20 councils.

Please see the full repository of the Food and Healthy Weight theme's work via the QR code above.

Next Steps

Thanks to more funding, we can expand projects on free school meals, school food environments, food systems, food insecurity and child health.

Engaging communities and the general public remain central to our work. We will continue sharing results with councils, in conferences, community and media events, as well as supporting our partners with our tools and resources.



PLAY & PHYSICAL ACTIVITY



Objectives of the theme

Our aims and objectives are simple: bring together people with an interest in promoting environments to support activity and play in children and families, change policy or practice to provide opportunities for families to be active in safe and attractive environments and work in partnership with community organisations and with local government in both Bradford and Tower Hamlets as well as with our academic partners, to co-produce interventions and evaluations.

What we have learnt

Since 2019 we have co-designed, co-produced and implemented an evidence and place-based whole system approach (WSA) to tackling children's physical inactivity (called JUMP). The WSA includes 15 individual and intersecting interventions including Creating Active Schools (healthy learning theme) Greenspace development and Active playful parks (healthy places theme) Active Faith Settings (food and health weight theme) and People Development and Young physical activity leaders (Healthy livelihoods theme) as well as an iterative research and learning process to support constant improvement and adaption to what is being implemented.

Please see the full repository of the Play and Physical Activity theme's work via the QR code above.

Next Steps

By Autumn 2024 we will have the findings from the JUMP control trial examining the effectiveness of the JUMP programme on children's physical activity levels and other health outcomes (BMI, Social, emotional and behavioural health). We will also have developed explanatory accounts for each of the individual 15 workstreams, and have understood children and families experiences of the JUMP programme.

We will have begun disseminating JUMP findings to other local authorities and to Sport England. We will disseminate the finding of the PUSH project to local authorities, community partners, children and families and academics. If the findings from the PUSH project are promising we will apply for further funds to develop the intervention.



CO-PRODUCTION & CITIZEN SCIENCE



Objectives of the theme

To build capacity for, and lead innovation in co-production and citizen science methods.

What we have learnt

Community empowerment is at the heart of our ActEarly 'City Collaboratory' approach and what we do. We know that real and lasting changes only happen if communities have a fair say in decisions that are made about their health and wellbeing. We have co-produced a co-production strategy (read this [here](#): which outlines our values to co-production, including agency, reciprocity and trust and identifies nine principles for effective co-production).

The strategy forms the basis for co-production activities within the Bradford and Tower Hamlets Health Research Determinants Collaboration and was included as a central component of the Health Determinant Research Collaboration bids for both sites. We hope this will form a step change in how communities can influence research and practice in their communities.

Building on our co-production strategy, with funding from the National Institute for Health Research, we have established a Co-production and Peer Research (CoPPeR) network in Bradford. At the same time the collaboration will strengthen partnerships between researchers and community organisations, and will mean these organisations will have capacity to carry out further research into other areas of concern their community might identify.

Please see the full repository of the Co-Production and Citizen Science Theme via the QR code above.

Next Steps

The next steps for our theme are to develop methods to assess the impact of co-production, recognising that many of the outcomes may be difficult to measure, such as trust, connectedness, and building of social capital.

Our co-production approach is embedded within the newly awarded UKRI population health improvement Healthy Urban Places project. The project will unite communities across the Yorkshire and Humber, and Cheshire and Merseyside region. Community collaboratives will look at how and why health is affected by local environments such as clean air, quality housing, parks, public transport, access to schools and health services etc, and its aim will be to directly influence decisions that improve local places for health.

We are working to build capacity for community research. In Tower Hamlets we will be working closely with the UCL Citizen Science academy to sharing learning and align methods, and will be working to increase the capacity of community members and the council to carry out community-led research. In Bradford we are establishing pathways for young people to enter a research career outside of the traditional route, particularly in the realms of co-production and participatory research approaches including entry level and apprentice positions.





EVALUATION



Objectives of the theme

Evaluating public health initiatives is key to making sure they are effective and understanding how they can be improved. However, programmes are often not formally evaluated before deciding whether they should be continued.

The Evaluation theme aims to promote and support the inclusion of evaluations in public health research.

We have done this through providing support for 20 ActEarly projects and building capacity through initiatives like our regular 'Methods Club' presentations and workshops.

What we have learnt and next steps

We recently completed our 'meta-evaluation' of ActEarly, a mixed-methods project evaluating the impact of the programme (results available soon). We hope these findings will support similar collaborations in their journey to improving children's health and wellbeing.

Please see the full repository of the Evaluation theme's work via the QR code above.

PANEL MEMBERS



Trevor Sheldon

After 28 years at the University of York, Trevor moved to Queen Mary University of London in 2020 where he co-directs (with John Wright in Bradford) the ActEarly consortium. He also collaborates closely with the Tower Hamlets HDRC. Trevor chairs the NIHR Population Health Career Scientist Award panel



Nick Wareham

Nick Wareham is the Director of the MRC Epidemiology Unit and co-Director of the Institute of Metabolic Science. He is also the Director of the Centre for Diet and Activity Research (CEDAR) and the Global Diet and Activity Research Group and Network (GDAR)



Deborah Lawlor

Deborah A. Lawlor CBE FFPH FMedSci is a British epidemiologist and professor at the University of Bristol, where she is the deputy director of the Medical Research Council Integrative Epidemiology Unit



Susan Hinchcliffe

Councillor Susan Hinchcliffe was elected Leader of Bradford Council in May 2016. She was also Chair of West Yorkshire Combined Authority from 2017 until 2021 and was instrumental in securing the West Yorkshire Mayoral Devolution Deal, which resulted in West Yorkshire electing its first Metro Mayor in May 2021



Andy Cope

Andy Cope is the Director of Evidence and Insight at Sustrans. Andy leads on identifying, articulating and maintaining opportunities to enhance the evidence base for sustainable transport. He is responsible for managing key relationships with external experts, academics, and senior civil servants



Kersten England

Kersten England is the Chair of the Young Foundation & Co Director of the Yorkshire Policy Innovation Partnership. Kersten is a former local authority Chief Executive, initially in York for six years and latterly eight years for the City of Bradford Metropolitan District Council

PANEL MEMBERS



Sophie Hawkesworth

Sophie Hawkesworth is a Senior Research Manager for the Wellcome Trust, responsible for managing a research portfolio and for strategic initiatives including the UK Prevention Research Partnership



David Pye

David Pye is the Programme Manager for Research at the Local Government Association bringing experience from previous roles at National Foundation for Educational Research, Local Government Association, NYC GB and Peterborough Cathedral



Lorraine O'Donnell

Lorraine O'Donnell is the Chief Executive for City of Bradford Metropolitan District Council and former Chief Executive of Cheshire East Council



Somen Banerjee

Somen Banerjee is the Director of Public Health, London Borough of Tower Hamlets. Somen is Director of Public Health (DPH) in London Borough of Tower Hamlets which is one of the Health Determinants Research Collaboration (HDRC) sites



Karien Stronks

Karien Stronks works at the Department of Public Health, Medical Centre/University of Amsterdam, where she is a Professor of Public Health



Ashley Adamson

Ashley Adamson is the Director of the NIHR Research Support Service Public Health Specialist Centre. Ashley is also a Professor in Public Health Nutrition at Newcastle University, and leads a research team in Public Health Nutrition Research with the Human Nutrition Research Centre, and the Public Health Improvement theme in the Institute of Health and Society

PANEL MEMBERS



Kate Pickett

Kate Pickett, OBE is Professor of Epidemiology in the Department of Health Sciences and is also Associate Director of the Leverhulme Centre for Anthropocene Biodiversity



Claire Cameron

Claire Cameron is the Professor of Social Pedagogy at University College London and Deputy Director, Thomas Coram Research Unit (TCRU) and founding member of the Centre for Understanding of Social Pedagogy (CUSP) at UCL Institute of Education



Emma Gordon

Emma Gordon is the Director of the Administrative Data Research UK (ADR UK) programme at the Economic & Social Research Council (ESRC)



Nicola Christie

Nicola Christie is Professor of Transport Safety at UCL. Nicola is also currently the Director of Engagement for the Department of Civil, Environmental and Geomatic Engineering



Rosie McEachan

Rosie McEachan is the Director of the Born in Bradford Research programme. Rosie holds a visiting professor position at University College London and an honorary chair position at the University of Bradford



Laura Vaughan

Laura Vaughan is Professor of Urban Form and Society and the Director of the Space Syntax Laboratory at the Bartlett School of Architecture, UCL

PANEL MEMBERS



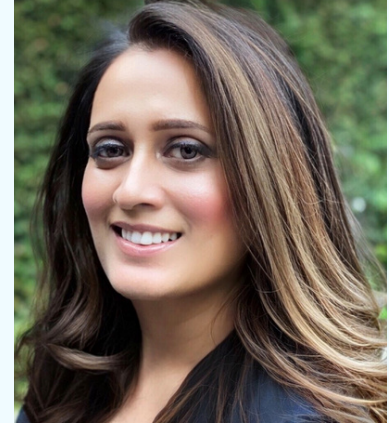
Elizabeth Orton

Elizabeth Orton is the Director of the Unit of Lifespan and Population Health in the School of Medicine, and the Chief Investigator of the NIHR PHIRST-Light team, University of Nottingham



Sayma Mirza

Sayma Mirza is the the Associate Director for Children, Young People and Families for the West Yorkshire Integrated Care Board



Saira Ali

Saira Ali is an award winning Landscape Architect and Team Leader at Bradford Metropolitan District Council and leads a dedicated team focused on placemaking in shaping our society and environment



Kathryn Lofthus

Kathryn Loftus is the Director for the Education Alliance for Life Chances. Formerly Programme Director for the Bradford Opportunity Area, and has held a number of Local Authority management roles across Sheffield, Kirklees and Bradford



John Hudson

John Hudson is Professor of Social Policy in the School and Academic Director of the University of York's policy engagement unit The York Policy Engine



Nadira Mirza

Nadira Mirza is a Professor of Lifelong Learning and Social Mobility at Leeds Trinity University and is Strategic Advisor to the Deputy Vice Chancellor

PANEL MEMBERS



Mark Mon-Williams

Mark Mon-Williams holds a Chair in Cognitive Psychology at the University of Leeds, and leads the Centre of Applied Education Research at Bradford Institute of Health Research



Naomi Mead

Naomi Mead is a Research and Evaluation Coordinator at The Bromley By Bow Centre in London



Maria Bryant

Maria Bryant is a Professor of Public Health Nutrition based at the University of York and the Bradford Institute for Health Research



Kim Shutler

Kim Shutler has been the CEO at The Cellar Trust, a Bradford based mental health charity since November 2014



Iain MacBeath

Iain McBeath is the Strategic Director of Health & Wellbeing at City of Bradford Metropolitan District Council



Ruth Gilbert

Ruth Gilbert is a Professor of Clinical Epidemiology, UCL and Co-Director NIHR Children and Families Policy Research Unit

PANEL MEMBERS



Sarah Muckle

Sarah Muckle is the Director of Public Health at City of Bradford Metropolitan District Council



Dan Lewer

Dan Lewer leads the Bradford Centre for Health Data Science at BIHR. Dan is a Consultant in Public Health and honorary Associate Professor of Public Health and Epidemiology at University College London



Kuldeep Sohal

Kuldeep Sohal is the Director of the Connected Bradford programme which connects de-identified, longitudinal, near to real time data from the NHS and non-healthcare organisations



Rob Shore

Rob Shore is Data Manager for City of Bradford Metropolitan District Council Health Determinants Research Collaboration (HDRC). He was previously an embedded researcher and Data Analyst between ActEarly and the local authority where he was responsible for facilitating data sharing and linking routine data between public services



Shahid Islam

Shahid Islam is a Senior Research Fellow in the ActEarly Collaboratory at the Bradford Institute for Health Research with a special interest in citizen science and co-production

**THANK YOU FOR
ATTENDING
TODAY**

We would welcome
your feedback here:

